

Ferrite Cores

For Flat Cable

Separable Square

SU Series

FEATURES

- For use with round cables. Both the clamp-on type and the regular type cores are available with diameters ranging from 7.3 to 13mm. Clamp-on cores can be attached to an existing cable while avoiding removal or cutting of the cable.
- Both regular and clamp-on types are available for use with flat cables. The clamp-on type core is highly effective for noise absorption (EMC) due to precision finish of the mating surfaces.

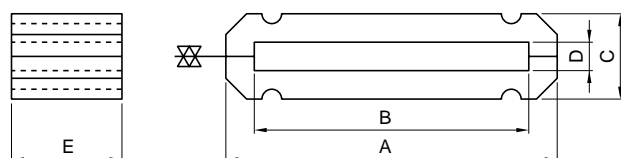
APPLICATIONS

Imaging devices, audio equipment, automotive electronics, telecommunication devices, office automation equipment, and digital interface various other cables.

MATERIAL CHARACTERISTICS

Material	Initial permeability μ_i	Temperature factor of initial permeability $\alpha_{\mu i} \times 10^{-6}/^{\circ}\text{C}$	Saturation magnetic flux density $B_s(\text{mT})$
HF70	1500	1 to 3	280[H=1600A/m]
HF60	900	8 to 14	300[H=1600A/m]

SHAPES AND DIMENSIONS/CHARACTERISTICS

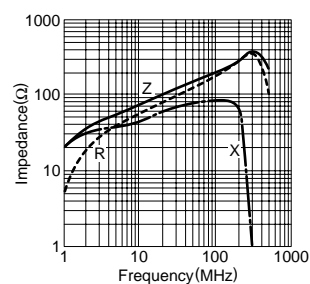


Part No.	Dimensions(mm)					Impedance Z (Ω)[at 23°C]		
	A	B	C	D	E	10MHz typ.	100MHz typ.	100MHz min.
HF60SU33X2X29	45.1	33.4	12.8	2	28.6	65	200	150
HF60SU52X2X29	63.5	51.8	12.8	2	28.6, 1.126	50	170	125
HF60SU64X2X29	76.2	64.4	12.8	2	28.6, 1.126	45	140	105

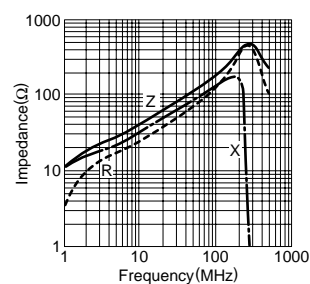
TYPICAL ELECTRICAL CHARACTERISTICS

Z, R, X vs. FREQUENCY CHARACTERISTICS

HF60SU33X2X29



HF60SU64X2X29



HF60SU52X2X29

