

Inductors

For Power Line SMD

SLF Series SLF7032 Type

FEATURES

- The SLF series are characterized by low profile, low DC resistance, and high current handling capacities.
- Because they are magnetically shielded, these parts can be used in high-density mounting configurations.
- Flat bottom surface ensures secure, reliable mounting.
- Provided in embossed carrier tape packaging for use with automatic mounting machines.

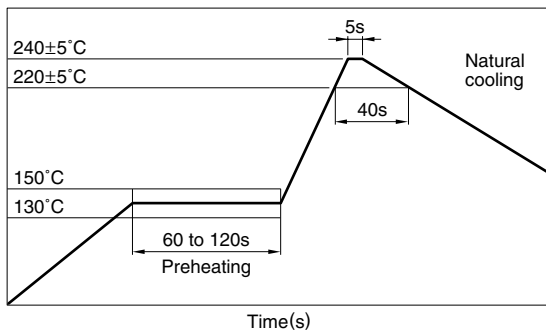
APPLICATIONS

Portable telephones, personal computers, hard disk drives, and other electronic equipment.

SPECIFICATIONS

Operating temperature range	-20 to +85°C [Including self-temperature rise]
Storage temperature range	-40 to +85°C[Unit of products]

RECOMMENDED REFLOW SOLDERING CONDITIONS



PRODUCT IDENTIFICATION

SLF	7032	T-	220	M	R96	-2
(1)	(2)	(3)	(4)	(5)	(6)	(7)

(1) Series name

(2) Dimensions L×W×T

7032	7.0×7.0×3.2mm
------	---------------

(3) Packaging style

T	Taping(reel)
---	--------------

(4) Inductance value

3R3	3.3μH
100	10μH

(5) Inductance tolerance

M	±20%
---	------

(6) Rated current

1R9	1.9A
R96	0.96A

(7) TDK internal code

(Some products may not have this number. See the main body for details.)

PACKAGING STYLE AND QUANTITIES

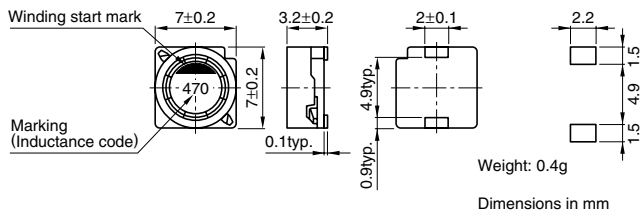
Packaging style	Quantity
Taping	1000 pieces/reel

Inductors

SLF Series SLF7032 Type

For Power Line
SMD

SHAPES AND DIMENSIONS/RECOMMENDED PC BOARD PATTERN



ELECTRICAL CHARACTERISTICS

Inductance (μH)	Inductance tolerance (%)	Test frequency L (kHz)	DC resistance (Ω) $\pm 20\%$	Rated current (A) max.	Part No.
3.3	± 20	1	0.023	1.9	SLF7032T-3R3M1R9-2
4.7	± 20	1	0.036	1.7	SLF7032T-4R7M1R7-2
6.8	± 20	1	0.041	1.6	SLF7032T-6R8M1R6-2
10	± 20	1	0.053	1.4	SLF7032T-100M1R4-2
15	± 20	1	0.075	1.1	SLF7032T-150M1R1-2
22	± 20	1	0.11	0.96	SLF7032T-220MR96-2
33	± 20	1	0.16	0.75	SLF7032T-330MR75-2
47	± 20	1	0.24	0.67	SLF7032T-470MR67-2
68	± 20	1	0.31	0.59	SLF7032T-680MR59-2
100	± 20	1	0.45	0.45	SLF7032T-101MR45-2
150	± 20	1	0.65	0.37	SLF7032T-151MR37-2
220	± 20	1	1.05	0.29	SLF7032T-221MR29-2
330	± 20	1	1.67	0.22	SLF7032T-331MR22-2
470	± 20	1	2.05	0.2	SLF7032T-471MR20-2
680	± 20	1	3.15	0.16	SLF7032T-681MR16-2
1000	± 20	1	4.78	0.13	SLF7032T-102MR13-2

- Test equipment L:YHP 4194A IMPEDANCE GAIN/PHASE ANALYZER, or equivalent (Measured at 1kHz/0.5V)
Rdc:MATSUSHITA,VP-2941A DIGITAL MILLIOHM METER, or equivalent

TYPICAL ELECTRICAL CHARACTERISTICS

INDUCTANCE CHANGE vs. DC SUPERPOSITION CHARACTERISTICS

