

Ferrite Cores

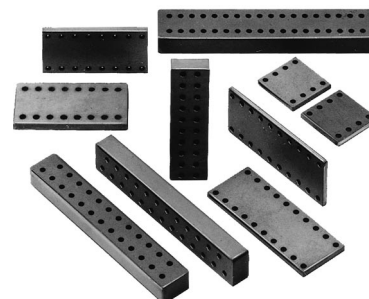
For IC and Connector

Multiple Holes

MH Series

FEATURES

- The MH Series provides simple, effective EMC suppression at terminal pins. Terminal pins that can be inserted include those of DIP type ICs, DIP IC sockets, and grid square type connector receptacles.
- The comprehensive product lineup offers numerous sizes, hole configurations, and ferrite materials. The variety of impedance vs. frequency characteristics enables optimization of EMC suppression performance for a wide range of possible applications.



APPLICATIONS

Suppression of digital signal ringing and prevention RFI from IC pins, suppression of interface cable EMC, preventing the entry of RFI into a device, and shaping the waveform of digital signals.

SHAPES AND DIMENSIONS/CHARACTERISTICS

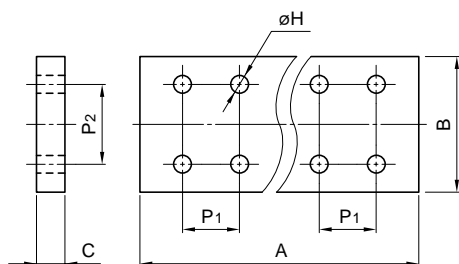


Fig.1

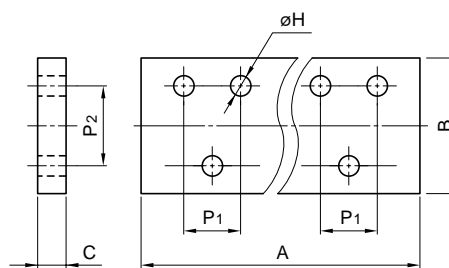


Fig.2

FOR IC

Part No.	Fig.	Dimensions(mm)						Number of holes	Impedance Z(Ω)at 23°C		
		A	B	C*	P ₁	P ₂	øH		10MHz typ.	100MHz typ.	100MHz min.
HF70MH2.5X7.6X8	1	10.16	10.16	1	2.54	7.62	1.08	8	9	25	17
HF70MH2.5X7.6X10	1	12.7	10.16	1	2.54	7.62	1.08	10	9	25	17
HF70MH2.5X7.6X14	1	17.78	10.16	1	2.54	7.62	1.08	14	9	25	17
HF70MH2.5X7.6X16	1	20.32	10.16	1	2.54	7.62	1.08	16	9	25	17
HF70MH2.5X7.6X16A	1	20.32	10.16	1.5	2.54	7.62	1.08	16	13	29	20
HF70MH2.5X7.6X20	1	25.4	10.16	1	2.54	7.62	1.08	20	9	25	17

*Dimension C is alterable on request.

FOR CONNECTOR

Part No.	Fig.	Dimensions(mm)						Number of holes	Impedance Z(Ω)at 23°C		
		A	B	C*	P ₁	P ₂	øH		10MHz typ.	100MHz typ.	100MHz min.
HF70MH2.5X2.5X8	1	10.16	7	3	2.54	2.54	1.08	8	27	50	35
HF70MH2.5X2.5X16	1	20.32	7	3	2.54	2.54	1.08	16	27	50	35
HF70MH2.5X2.5X20	1	25.4	7	3	2.54	2.54	1.08	20	27	50	35
HF40MH2.7X2.8X9-F	2	16.15	6.05	3.75	2.74	2.84	1.02	9	9	68	48
HF40MH2.7X2.8X15-F	2	24.1	6.05	3.75	2.74	2.84	1.02	15	9	68	48
HF40MH2.7X2.8X25-F	2	37.55	6.05	3.75	2.76	2.84	1.02	25	9	68	48
HF40MH2.2X4.3X36-F	1	41.52	8.6	3.75	2.16	4.29	1.08	36	10	74	52
HF40MH2.7X2.8X9-A	2	15	7	2.6	2.74	2.84	1.5	9	6	43	30
HF40MH2.8X2.8X15-A	2	23	7	2.6	2.77	2.84	1.5	15	6	43	30
HF40MH2.8X2.8X25-A	2	37	7	2.6	2.77	2.84	1.5	25	6	43	30

*Dimension C is alterable on request.

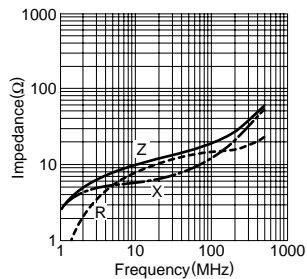
Ferrite Cores

For IC and Connector
Multiple Holes

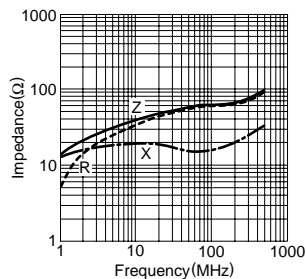
MH Series

TYPICAL ELECTRICAL CHARACTERISTICS Z, R, X vs. FREQUENCY CHARACTERISTICS

HF70MH2.5X7.6XXX*

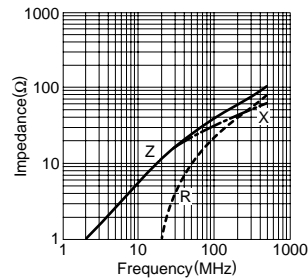


HF70MH2.5X2.5XXX



HF40MH2.7X2.8XXX-A

HF40MH2.8X2.8XXX-A



*Number of holes

