

EMC Components

MEM-TC Series MEM2012TC Type

3-Terminal Filters for Signal Line and DC Power Line SMD

FEATURES

- Multilayer chip EMC filter utilizing a T-type circuit.
- Entirely monolithic structure results in high reliability.
- Due to closed magnetic circuit architecture, high-density installation becomes possible, and crosstalk generation is prevented.
- Steep attenuation characteristic plot. Highly effective noise suppression.
- Covers a wide range of frequencies.
- MEM2012TC combines a bead inductor with a through-type capacitor.

APPLICATIONS

Computer and computer peripherals, VCRs, TVs, car audio equipment, printers, game machines, etc.

TEMPERATURE RANGE

Operating	-40 to +85°C
-----------	--------------

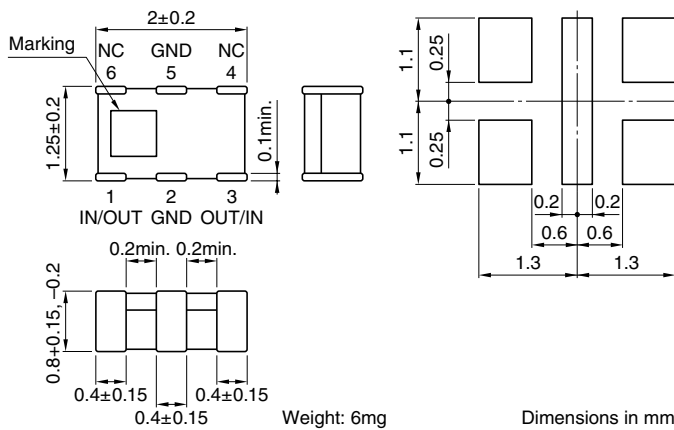
PRODUCT IDENTIFICATION

MEM	2012	T	C100	T
(1)	(2)	(3)	(4)	(5)

- (1) Series name
- (2) Dimensions LxW
- (3) T-type circuit
- (4) Capacitance C100:10pF at 1MHz
- (5) Packaging style T:Taping



SHAPES AND DIMENSIONS/RECOMMENDED PC BOARD PATTERN



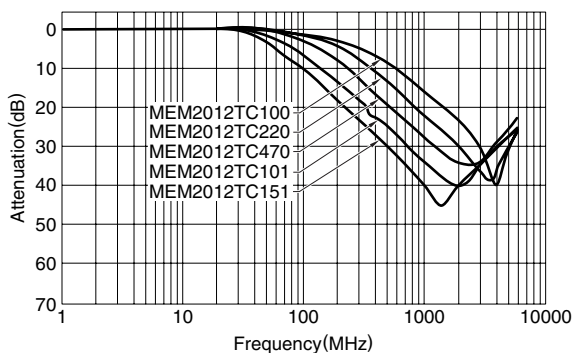
ELECTRICAL CHARACTERISTICS

Part No.	Capacitance* (pF)	Tolerance (%)	Rated voltage Edc(V)max.	Rated current (mA)max.	DC resistance (Ω) max. [Terminal No.1 to 3]
MEM2012TC100	10	±30	12	1	0.12
MEM2012TC220	22	±30	12	1	0.12
MEM2012TC470	47	±30	12	1	0.12
MEM2012TC101	100	±30	12	1	0.12
MEM2012TC151	150	±30	12	1	0.12

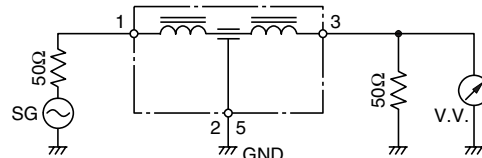
*Measuring frequency: 1(MHz), measuring voltage: 1(V)

TYPICAL ELECTRICAL CHARACTERISTICS

ATTENUATION vs. FREQUENCY CHARACTERISTICS



MEASURING CIRCUIT



PACKAGING STYLE AND QUANTITIES

Packaging style	Quantity
Taping	4000 pieces/reel