

# EMC Components

# MEA Series MEA3216P Type

## 3-Terminal Filters for Signal Line and DC Power Line SMD

### FEATURES

- Own unique 3-line multilayer  $\pi$ -type 3-terminal filter array.
- Tape packaging allows use by automatic assembly equipment.
- Entirely monolithic structure is almost unaffected by crosstalk.

### APPLICATIONS

RGB and signal lines of data terminals, computing and communications devices, color liquid crystal displays, printers, DVDs, electronic games, portable audio-visual equipment, etc.

### TEMPERATURE RANGE

Operating	-40 to +85°C
-----------	--------------

### PRODUCT IDENTIFICATION

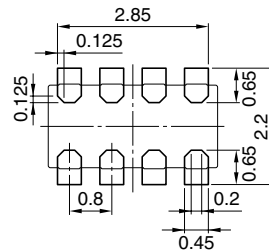
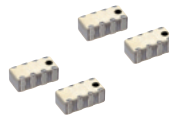
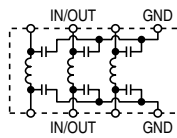
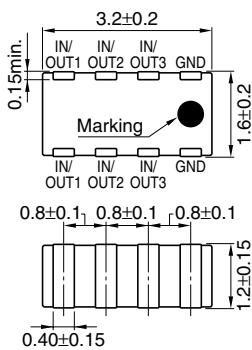
MEA	3216	P	131R	T
(1)	(2)	(3)	(4)	(5)

- (1) Series name
- (2) Dimensions L×W
- (3)  $\pi$  type circuit
- (4) Cutoff frequency (MHz)  
131R:fc=130MHz
- (5) Packaging style T:Taping

### PACKAGING STYLE AND QUANTITIES

Packaging style	Quantity
Taping	2000 pieces/reel

### SHAPES AND DIMENSIONS/CIRCUIT DIAGRAM/RECOMMENDED PC BOARD PATTERN



\*These products are only for reflow soldering.

### ELECTRICAL CHARACTERISTICS

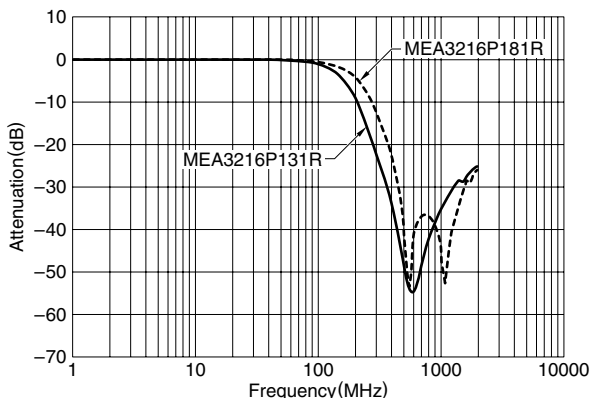
Part No.	Cutoff frequency (MHz)	Attenuation 20dB frequency range (MHz)	Rated voltage (V)max.	Rated current (mA)max.
MEA3216P131R	130	400 to 1500	10	100
MEA3216P181R	180	500 to 1500	10	100

#### • TEST EQUIPMENT

- HP-8753B NETWORK ANALYZER, or equivalent
- HP-85046A S-PARAMETER TEST SET, or equivalent

### TYPICAL ELECTRICAL CHARACTERISTICS

#### ATTENUATION vs. FREQUENCY CHARACTERISTICS



#### TYPICAL CROSSTALK CHARACTERISTICS

