

EMC Components

ACH Series ACH3218, 4518 Types

3-Terminal Filters for Signal Line and DC Power Line SMD

FEATURES

- These T-type EMC filters comprise ferrite beads and chip capacitors and are engineered to handle high current levels.
- They provide highly effective EMC suppression.
- Because their structures are almost entirely ferrite, they exhibit excellent attenuation characteristics.
- Available for reflow soldering.

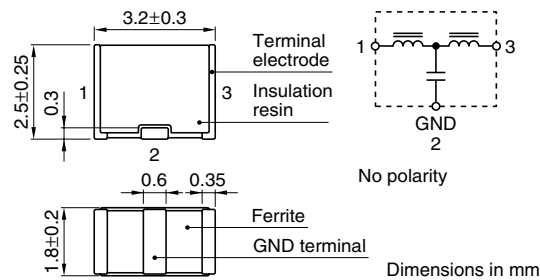
TEMPERATURE RANGES

Operating	-25 to +85°C
-----------	--------------

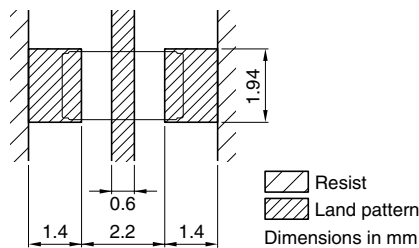
PACKAGING STYLE AND QUANTITIES

Packaging style	Quantity
Taping	1000 pieces/reel

ACH3218 TYPE SHAPES AND DIMENSIONS/CIRCUIT DIAGRAM



RECOMMENDED PC BOARD PATTERN REFLOW SOLDERING



ELECTRICAL CHARACTERISTICS

Part No.	Maximum attenuation frequency (MHz)	25dB attenuation frequency range (MHz)	Rated voltage E _{dc} (V)max.	Rated current (A)max.	DC resistance (Ω)max. [Terminal No.1 to 3]	Insulation resistance (MΩ)min. [Terminal No.1 to 2/No.2 to 3]
ACH3218-223-T	17	11 to 55	20	1.5	0.06	1000
ACH3218-103-T	27	17 to 60	20	1.5	0.06	1000
ACH3218-682-T	37	22 to 75	20	1.5	0.06	1000
ACH3218-472-T	45	30 to 85	20	1.5	0.06	1000
ACH3218-332-T	55	37 to 90	20	1.5	0.06	1000
ACH3218-222-T	65	45 to 105	20	1.5	0.06	1000
ACH3218-152-T	80	60 to 115	20	1.5	0.06	1000
ACH3218-102-T	100	80 to 140	20	1.5	0.06	1000
ACH3218-681-T	120	95 to 150	20	1.5	0.06	1000
ACH3218-471-T	145	120 to 180	20	1.5	0.06	1000
ACH3218-331-T	165	130 to 210	20	1.5	0.06	1000
ACH3218-221-T	200	170 to 250	20	1.5	0.06	1000
ACH3218-151-T	240	205 to 280	20	1.5	0.06	1000
ACH3218-101-T	300	265 to 340	20	1.5	0.06	1000
ACH3218-680-T	370	340 to 420	20	1.5	0.06	1000
ACH3218-470-T	450	420 to 500	20	1.5	0.06	1000
ACH3218-330-T	530	500 to 600	20	1.5	0.06	1000
ACH3218-220-T	650	600 to 700	20	1.5	0.06	1000

EMC Components

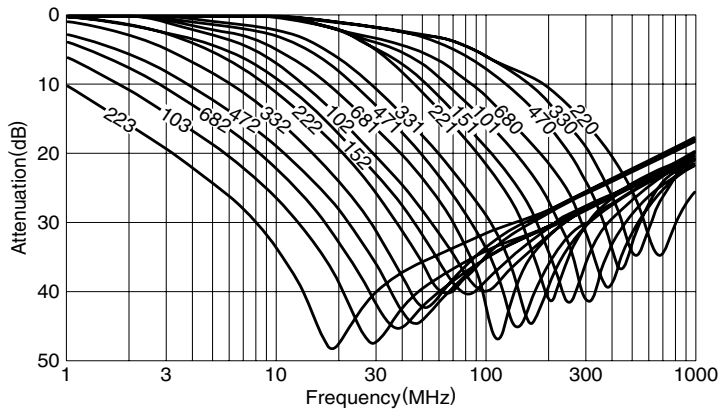
ACH Series ACH3218, 4518 Types

3-Terminal Filters for Signal Line and DC Power Line SMD

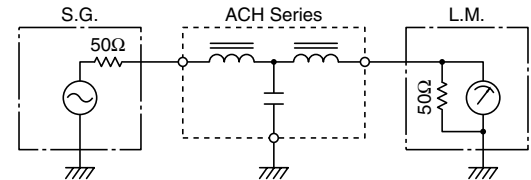
ACH3218 TYPE

TYPICAL ELECTRICAL CHARACTERISTICS

ATTENUATION vs. FREQUENCY CHARACTERISTICS

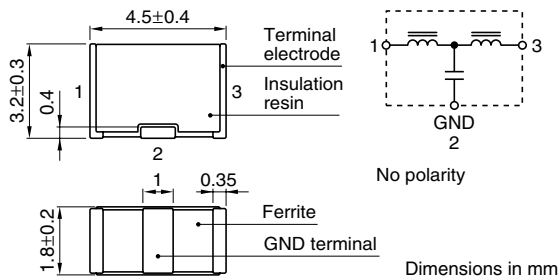


MEASURING CIRCUIT

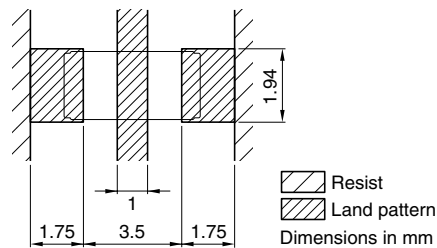


ACH4518 TYPE

SHAPES AND DIMENSIONS/CIRCUIT DIAGRAM



RECOMMENDED PC BOARD PATTERN REFLOW SOLDERING



ELECTRICAL CHARACTERISTICS

Part No.	Maximum attenuation frequency (MHz)	25dB attenuation frequency range (MHz)	Rated voltage Edc (V)max.	Rated current (A)max.	DC resistance (Ω)max. [Terminal No.1 to 3]	Insulation resistance (MΩ)min. [Terminal No.1 to 2/No.2 to 3]
ACH4518-333-T	12	6 to 60	50	2	0.04	1000
ACH4518-223-T	15	9 to 65	50	2	0.04	1000
ACH4518-153-T	18	11 to 70	50	2	0.04	1000
ACH4518-103-T	23	15 to 75	50	2	0.04	1000
ACH4518-682-T	35	20 to 85	50	2	0.04	1000
ACH4518-472-T	40	25 to 90	50	2	0.04	1000
ACH4518-332-T	50	35 to 100	50	2	0.04	1000
ACH4518-222-T	60	40 to 110	50	2	0.04	1000
ACH4518-152-T	75	50 to 130	50	2	0.04	1000
ACH4518-102-T	90	65 to 150	50	2	0.04	1000
ACH4518-681-T	105	75 to 160	50	2	0.04	1000
ACH4518-471-T	125	95 to 180	50	2	0.04	1000
ACH4518-331-T	150	115 to 205	50	2	0.04	1000
ACH4518-221-T	190	150 to 250	50	2	0.04	1000
ACH4518-151-T	230	180 to 290	50	2	0.04	1000
ACH4518-101-T	280	235 to 335	50	2	0.04	1000
ACH4518-680-T	340	290 to 395	50	2	0.04	1000
ACH4518-470-T	410	360 to 460	50	2	0.04	1000
ACH4518-330-T	500	450 to 550	50	2	0.04	1000
ACH4518-220-T	600	530 to 650	50	2	0.04	1000

EMC Components

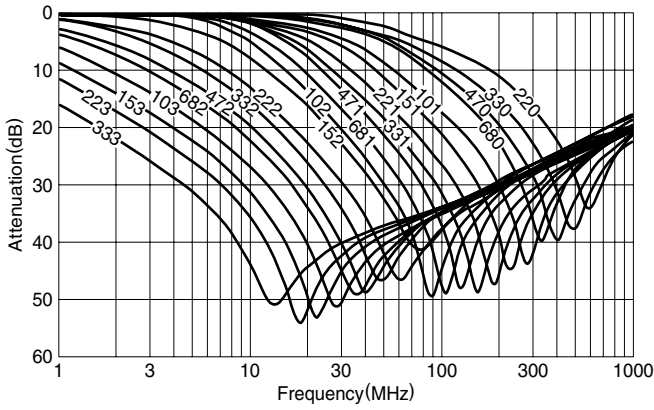
ACH Series ACH3218, 4518 Types

3-Terminal Filters for Signal Line and DC Power Line
SMD

ACH4518 TYPE

TYPICAL ELECTRICAL CHARACTERISTICS

ATTENUATION vs. FREQUENCY CHARACTERISTICS



MEASURING CIRCUIT

