

EMC Components

ACF Series ACF321825, 451832 Types

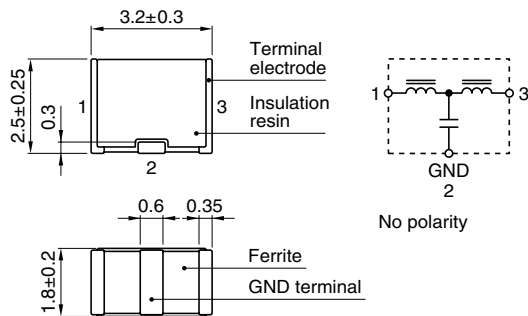
3-Terminal Filters for Signal Line and DC Power Line SMD

FEATURES

- The ACF series are T-type EMC filters incorporating ferrite chip beads and multilayer ceramic chip capacitors.
- The external structure consists entirely of ferrite, enabling these parts to achieve superior attenuation characteristics despite their extremely compact dimensions.
- Because they can be mounted on edge, the ACF series are ideal for high-density circuit configurations.
- Available for reflow soldering.

ACF321825 TYPE

SHAPES AND DIMENSIONS/CIRCUIT DIAGRAM



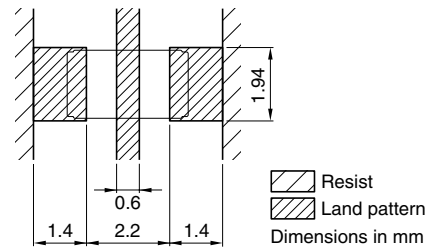
TEMPERATURE RANGES

| | |
|-----------|--------------|
| Operating | -25 to +85°C |
|-----------|--------------|

PACKAGING STYLE AND QUANTITIES

| | |
|-----------------|------------------|
| Packaging style | Quantity |
| Taping | 1000 pieces/reel |

RECOMMENDED PC BOARD PATTERN REFLOW SOLDERING



ELECTRICAL CHARACTERISTICS

| Part No. | Maximum attenuation frequency (MHz) | 25dB attenuation frequency range (MHz) | Rated voltage E _{dc} (V)max. | Rated current (mA)max. | DC resistance (Ω)max. [Terminal No.1 to 3] | Insulation resistance (MΩ)min. [Terminal No.1 to 2/No.2 to 3] |
|-----------------|-------------------------------------|--|---------------------------------------|------------------------|--|---|
| ACF321825-223-T | 17 | 11 to 55 | 20 | 300 | 0.15 | 1000 |
| ACF321825-103-T | 27 | 17 to 60 | 20 | 300 | 0.15 | 1000 |
| ACF321825-682-T | 37 | 22 to 75 | 20 | 300 | 0.15 | 1000 |
| ACF321825-472-T | 45 | 30 to 85 | 20 | 300 | 0.15 | 1000 |
| ACF321825-332-T | 55 | 37 to 90 | 20 | 300 | 0.15 | 1000 |
| ACF321825-222-T | 65 | 45 to 105 | 20 | 300 | 0.15 | 1000 |
| ACF321825-152-T | 80 | 60 to 115 | 20 | 300 | 0.15 | 1000 |
| ACF321825-102-T | 100 | 80 to 140 | 20 | 300 | 0.15 | 1000 |
| ACF321825-681-T | 120 | 95 to 150 | 20 | 300 | 0.15 | 1000 |
| ACF321825-471-T | 145 | 120 to 180 | 20 | 300 | 0.15 | 1000 |
| ACF321825-331-T | 165 | 130 to 210 | 20 | 300 | 0.15 | 1000 |
| ACF321825-221-T | 200 | 170 to 250 | 20 | 300 | 0.15 | 1000 |
| ACF321825-151-T | 240 | 205 to 280 | 20 | 300 | 0.15 | 1000 |
| ACF321825-101-T | 300 | 265 to 340 | 20 | 300 | 0.15 | 1000 |
| ACF321825-680-T | 370 | 340 to 420 | 20 | 300 | 0.15 | 1000 |
| ACF321825-470-T | 450 | 420 to 500 | 20 | 300 | 0.15 | 1000 |
| ACF321825-330-T | 530 | 500 to 600 | 20 | 300 | 0.15 | 1000 |
| ACF321825-220-T | 650 | 600 to 700 | 20 | 300 | 0.15 | 1000 |

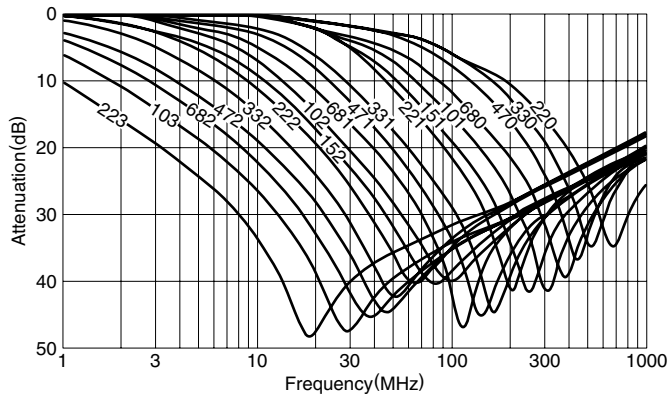
EMC Components

ACF Series ACF321825, 451832 Types

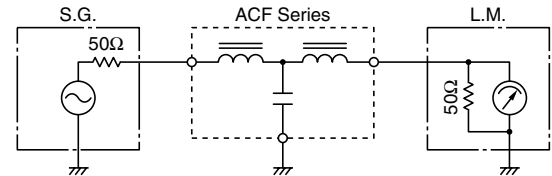
3-Terminal Filters for Signal Line and DC Power Line SMD

TYPICAL ELECTRICAL CHARACTERISTICS

ATTENUATION vs. FREQUENCY CHARACTERISTICS

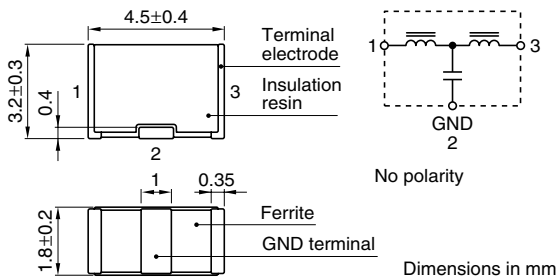


MEASURING CIRCUIT

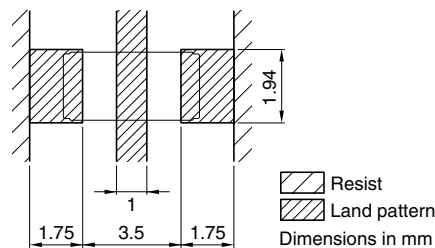


ACF451832 TYPE

SHAPES AND DIMENSIONS/CIRCUIT DIAGRAM



RECOMMENDED PC BOARD PATTERN REFLOW SOLDERING



ELECTRICAL CHARACTERISTICS

| Part No. | Maximum attenuation frequency (MHz) | 25dB attenuation frequency range (MHz) | Rated voltage Edc (V)max. | Rated current (mA)max. | DC resistance (Ω)max. [Terminal No.1 to 3] | Insulation resistance (MΩ)min. [Terminal No.1 to 2/No.2 to 3] |
|-----------------|-------------------------------------|--|---------------------------|------------------------|--|---|
| ACF451832-333-T | 12 | 7 to 60 | 50 | 300 | 0.15 | 1000 |
| ACF451832-223-T | 15 | 9 to 65 | 50 | 300 | 0.15 | 1000 |
| ACF451832-153-T | 18 | 11 to 70 | 50 | 300 | 0.15 | 1000 |
| ACF451832-103-T | 23 | 15 to 75 | 50 | 300 | 0.15 | 1000 |
| ACF451832-682-T | 35 | 20 to 85 | 50 | 300 | 0.15 | 1000 |
| ACF451832-472-T | 40 | 25 to 95 | 50 | 300 | 0.15 | 1000 |
| ACF451832-332-T | 50 | 35 to 100 | 50 | 300 | 0.15 | 1000 |
| ACF451832-222-T | 60 | 40 to 110 | 50 | 300 | 0.15 | 1000 |
| ACF451832-152-T | 75 | 50 to 130 | 50 | 300 | 0.15 | 1000 |
| ACF451832-102-T | 90 | 65 to 150 | 50 | 300 | 0.15 | 1000 |
| ACF451832-681-T | 105 | 75 to 160 | 50 | 300 | 0.15 | 1000 |
| ACF451832-471-T | 125 | 95 to 180 | 50 | 300 | 0.15 | 1000 |
| ACF451832-331-T | 150 | 115 to 205 | 50 | 300 | 0.15 | 1000 |
| ACF451832-221-T | 190 | 150 to 250 | 50 | 300 | 0.15 | 1000 |
| ACF451832-151-T | 230 | 190 to 290 | 50 | 300 | 0.15 | 1000 |
| ACF451832-101-T | 280 | 235 to 335 | 50 | 300 | 0.15 | 1000 |
| ACF451832-680-T | 340 | 295 to 395 | 50 | 300 | 0.15 | 1000 |
| ACF451832-470-T | 410 | 360 to 460 | 50 | 300 | 0.15 | 1000 |
| ACF451832-330-T | 500 | 450 to 550 | 50 | 300 | 0.15 | 1000 |
| ACF451832-220-T | 600 | 550 to 650 | 50 | 300 | 0.15 | 1000 |

EMC Components

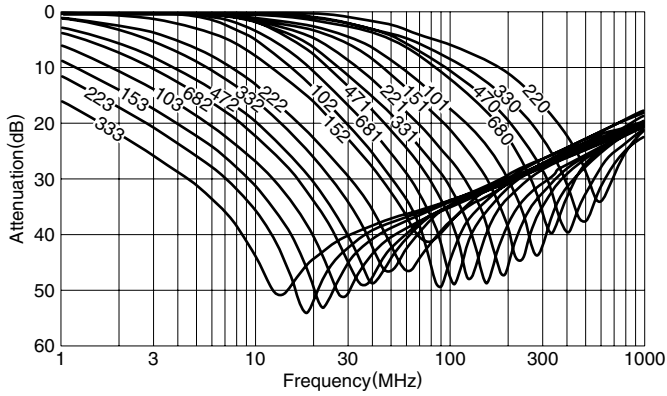
ACF Series ACF321825, 451832 Types

3-Terminal Filters for Signal Line and DC Power Line
SMD

ACF451832 TYPE

TYPICAL ELECTRICAL CHARACTERISTICS

ATTENUATION vs. FREQUENCY CHARACTERISTICS



MEASURING CIRCUIT

